



GOOD MORNING  
Have Good Trading Day

WEDNESDAY



Price is what you pay.  
Value is what you get.

- Warren Buffet



## MARKET PULSE

### INDIAN INDICES

| NAME   | CMP   | NET CH. | %     |
|--------|-------|---------|-------|
| SENSEX | 27981 | -21     | -0.08 |
| NIFTY  | 8622  | -13     | -0.16 |

### INDIAN ADR'S

| SYMBOL    | CLOSE | GAIN/ LOSS % |
|-----------|-------|--------------|
| DRREDDY   | 44.10 | -0.90        |
| HDFCBANK  | 69.29 | -0.03        |
| ICICIBK   | 7.21  | -1.77        |
| INFY      | 16.39 | -1.09        |
| TATAMOTOR | 36.76 | -3.24        |
| WIPRO     | 11.40 | -1.47        |

### FII AND MF ACTIVITY

| SYMBOL                 | In Crs. |
|------------------------|---------|
| FIIs Eq (Provisional)  | 536.27  |
| FIIs Index Future      | 3.87    |
| FIIs Index Options     | 519.82  |
| FIIs Stock Future      | -841.06 |
| FIIs Stock Options     | -71.41  |
| DII's Eq (Provisional) | -383.23 |

### CURRENCY

|            |             |
|------------|-------------|
| RBI RATE   | 02-AUG-2016 |
| RUPEE - \$ | 66.7612     |
| EURO       | 74.5990     |
| YEN 100    | 65.3200     |
| GBP        | 88.0313     |

## MARKET PULSE

### GLOBAL INDICES

| NAME      | CMP   | NET CH. | %     |
|-----------|-------|---------|-------|
| DOW       | 18313 | -90     | -0.49 |
| NASDAQ    | 5137  | -46     | -0.90 |
| NIKKEI    | 16249 | -141    | -0.86 |
| HANG SENG | 21728 | -401    | -1.81 |
| SGX NIFTY | 8634  | -26     | -0.30 |

### WORLD COMMODITIES

| FUTURE      | U\$\$  | CHANGES |
|-------------|--------|---------|
| CRUDE       | 39.79  | +0.28   |
| NATURAL GAS | 2.730  | -0.003  |
| GOLD        | 1369.7 | -2.9    |
| SILVER      | 20.690 | -0.011  |
| COPPER      | 2.2125 | +0.0035 |

### WORLD EVENTS

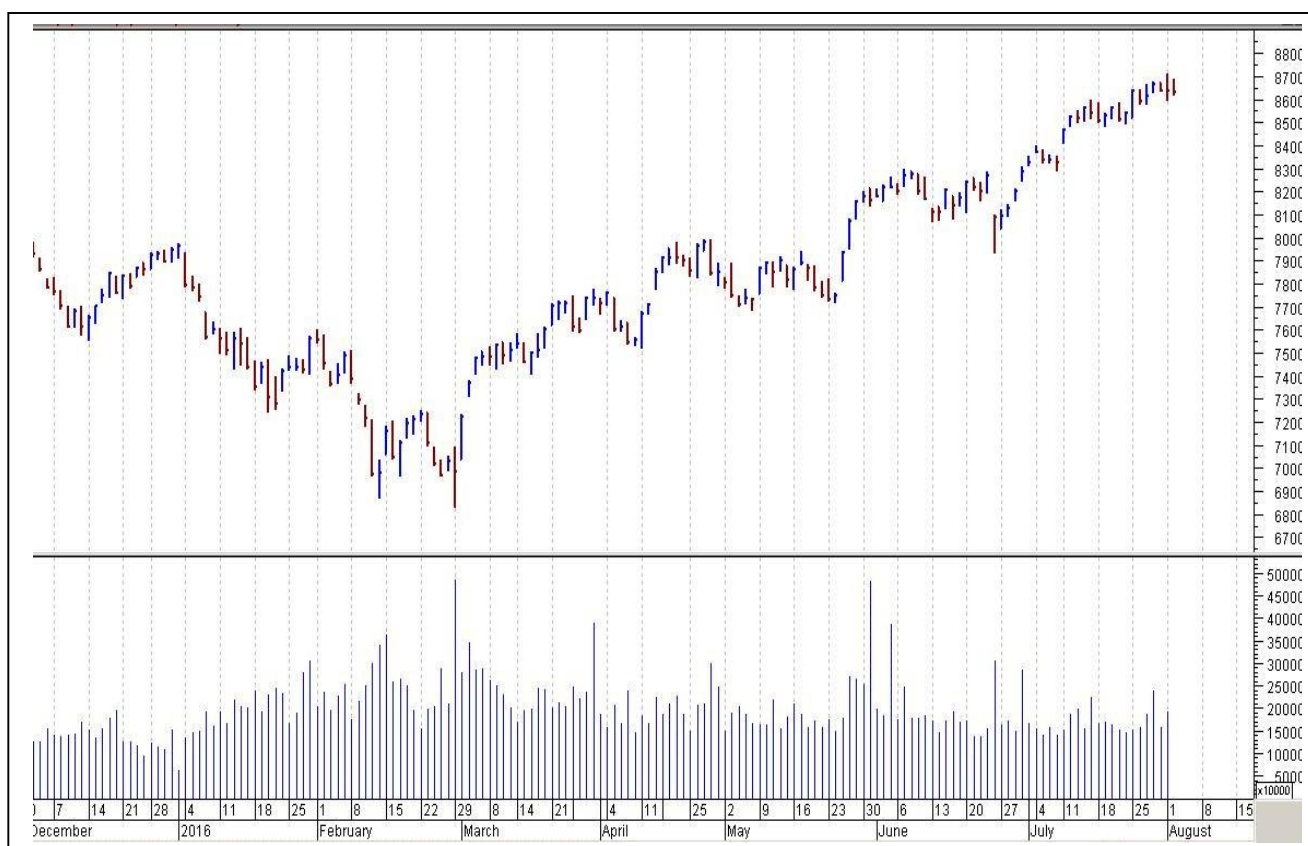
- US: ADP Non-Farm Employment Change
- ISM Non-Manufacturing PMI
- Crude Oil Inventories
- UK: Services PMI

## TOP STORY

- Oil Minister Says Not Considering Any Proposal To Merge Oil Companies
- Insecticides India Signs Pact With Hyderabad Chemical, A Unit Of Nihon Nohyaku Japan to market 'SUZUKA' in India.
- Century Plyboard To Dispose Of Its Investments In Unit Innovation Pacific Singapore
- Ambuja Cements Secured 3 Coal-Linkages For 1.19 Lakh Tonnes Coal
- Sun Pharma Global Gets US FDA Nod For Diabetes Drug Metformin Hydrochloride
- Rajya Sabha Passes Benami Transactions (Prohibition) Amendment Bill, 2016
- IDFC Bank Says: Neither IDFC Nor Bank's Board Approved Any Proposal For Merger/Reverse Merger
- L&T Infotech Enters Into Strategic Partnership With Pegasystems
- From PTI: Govt To Restrict/Stop Subsidy If Private Cos Do Not Slash Non-urea Fert Prices



## NIFTY CHART



## MARKET COMMENTARY

Indian equity markets that traded on a firm note for most part of the day suffered selling pressure at latter part of the day as investors' opted booking profit in select blue chip counters a day ahead of the discussion on GST Bill. The profit booking took place as investor sentiment turned negative after European markets hit a two-week low following poor results from some firms. Earlier, the market made a firm start as the stage was set for the introduction and likely passage of the constitutional amendment bill in the RajyaSabha to enable the roll-out of the Goods and Services Tax (GST). The government circulated to the MPs the amendments it has proposed in the constitution amendment bill to enable implementation of the tax. For today's trade Nifty likely to trade in the range between 8635 – 8655 in the upper side and 8595 – 8565 in the lower side.

### MARKET LEVELS

|        | CMP   | SUPPORT LEVELS |       |      |       | RESISTANCE LEVELS |      |       |       |
|--------|-------|----------------|-------|------|-------|-------------------|------|-------|-------|
| NIFTY  | 8622  | 8595           | 8565  | 8545 | 8525  | 8635              | 8655 | 8685  | 8735  |
| USDINR | 67.02 | 66.9           | 66.85 | 66.7 | 66.65 | 67.15             | 67.2 | 67.35 | 67.45 |





#### BULK DEALS (BSE)

| SCRIP | CLIENT NAME                           | BUY/SELL | QUANTITY | PRICE    |
|-------|---------------------------------------|----------|----------|----------|
| ATUL  | AAVISHKAR FINANCE AND TRADE P LIMITED | B        | 305,000  | 1,950    |
| ATUL  | ARVIND BRANDS LIMITED                 | S        | 180,000  | 1,950.01 |
|       |                                       |          |          |          |
|       |                                       |          |          |          |
|       |                                       |          |          |          |

#### BULK DEALS (NSE)

| SCRIP      | CLIENT NAME                   | BUY/SELL | QUANTITY | PRICE |
|------------|-------------------------------|----------|----------|-------|
| FCL        | SAMPAT PIYUSH CHANDRASINH     | BUY      | 600000   | 24.94 |
| FCL        | AMITABH HARIVANSHRAI BACHCHAN | SELL     | 600000   | 24.62 |
| SUPREMETEX | GUPTA BHAVNA                  | BUY      | 975000   | 7.54  |
| SUPREMETEX | SANJAY GUPTA                  | SELL     | 511500   | 7.53  |
|            |                               |          |          |       |

#### SCRIP'S IN F&O BAN

(To resume for normal trading below 80% of market wide limit required)

JINDALSTEL

#### Initial Public Offering (IPO)

| Company Name       | Security type | Issue Start Date | Issue End Date | Status |
|--------------------|---------------|------------------|----------------|--------|
| Dilip Buildcon Ltd | Equity        | 01-Aug-2016      | 03-Aug-2016    | Open   |
| SP Apparels Ltd    | Equity        | 04-Aug-2016      | 04-Aug-2016    | Open   |



| NIFTY 50 STOCKS: SUPPORT & RESISTANCE |       |           |           |             |             |             |
|---------------------------------------|-------|-----------|-----------|-------------|-------------|-------------|
| Symbol                                | Close | Support 1 | Support 2 | Pivot Point | Resistance1 | Resistance2 |
| ACC                                   | 1671  | 1657      | 1644      | 1673        | 1687        | 1702        |
| ADANI PORTS                           | 225   | 222       | 219       | 227         | 230         | 235         |
| AMBUJACEM                             | 264   | 261       | 258       | 266         | 269         | 273         |
| ASIANPAINT                            | 1123  | 1114      | 1104      | 1128        | 1138        | 1152        |
| AXISBANK                              | 550   | 546       | 542       | 551         | 554         | 559         |
| BAJAJ-AUTO                            | 2748  | 2723      | 2697      | 2751        | 2776        | 2805        |
| BANKBARODA                            | 151   | 148       | 144       | 150         | 154         | 156         |
| BHARTIARTL                            | 358   | 354       | 350       | 359         | 363         | 369         |
| BHEL                                  | 139   | 136       | 134       | 140         | 142         | 146         |
| BOSCHLTD                              | 24453 | 24192     | 23931     | 24596       | 24857       | 25260       |
| BPCL                                  | 579   | 571       | 563       | 585         | 594         | 608         |
| CAIRN                                 | 182   | 177       | 172       | 184         | 189         | 196         |
| CIPLA                                 | 518   | 513       | 508       | 521         | 527         | 535         |
| COALINDIA                             | 323   | 320       | 318       | 325         | 327         | 332         |
| DRREDDY                               | 2977  | 2962      | 2946      | 2980        | 2996        | 3014        |
| GAIL                                  | 376   | 373       | 370       | 377         | 381         | 385         |
| GRASIM                                | 4992  | 4959      | 4927      | 5003        | 5035        | 5078        |
| HCLTECH                               | 801   | 786       | 772       | 796         | 810         | 819         |
| HDFC                                  | 1342  | 1326      | 1311      | 1350        | 1366        | 1389        |
| HDFCBANK                              | 1243  | 1237      | 1231      | 1247        | 1253        | 1263        |
| HEROMOTOCO                            | 3262  | 3212      | 3162      | 3246        | 3296        | 3329        |
| HINDALCO                              | 136   | 134       | 132       | 136         | 138         | 140         |
| HINDUNILVR                            | 927   | 921       | 914       | 931         | 937         | 947         |
| ICICIBANK                             | 245   | 244       | 242       | 247         | 248         | 251         |
| IDEA                                  | 104   | 102       | 101       | 104         | 105         | 107         |
| INDUSINDBK                            | 1193  | 1184      | 1176      | 1198        | 1207        | 1221        |
| INFY                                  | 1084  | 1078      | 1071      | 1081        | 1088        | 1091        |
| ITC                                   | 261   | 254       | 247       | 258         | 265         | 269         |
| KOTAKBANK                             | 760   | 752       | 745       | 758         | 765         | 771         |
| LT                                    | 1503  | 1491      | 1479      | 1502        | 1515        | 1526        |
| LUPIN                                 | 1702  | 1684      | 1667      | 1715        | 1732        | 1763        |
| M&M                                   | 1458  | 1444      | 1429      | 1466        | 1480        | 1503        |
| MARUTI                                | 4986  | 4898      | 4809      | 4968        | 5057        | 5127        |
| NTPC                                  | 159   | 158       | 157       | 160         | 161         | 162         |
| ONGC                                  | 221   | 219       | 216       | 220         | 223         | 225         |
| PNB                                   | 123   | 121       | 118       | 123         | 125         | 127         |
| POWERGRID                             | 179   | 177       | 174       | 178         | 181         | 183         |
| RELIANCE                              | 1013  | 1006      | 999       | 1013        | 1020        | 1027        |
| SBIN                                  | 228   | 227       | 225       | 229         | 230         | 232         |
| SUNPHARMA                             | 829   | 821       | 814       | 834         | 842         | 855         |
| TATAMOTORS                            | 493   | 486       | 479       | 499         | 506         | 519         |
| TATAPOWER                             | 72    | 71        | 71        | 72          | 72          | 73          |
| TATASTEEL                             | 362   | 358       | 354       | 364         | 368         | 375         |
| TCS                                   | 2699  | 2687      | 2676      | 2702        | 2713        | 2727        |
| TECHM                                 | 499   | 486       | 473       | 498         | 511         | 523         |
| ULTRACEMCO                            | 3677  | 3639      | 3601      | 3698        | 3736        | 3795        |
| VEDL                                  | 156   | 151       | 146       | 159         | 164         | 171         |
| WIPRO                                 | 550   | 545       | 541       | 552         | 556         | 563         |
| YESBANK                               | 1228  | 1219      | 1210      | 1232        | 1241        | 1254        |
| ZEEL                                  | 500   | 494       | 488       | 500         | 505         | 511         |



## CORPORATE ACTION / BOARD MEETINGS

NSE Download Ref.No.: NSE/CML/32888:- Change in of the Company from Neyveli Lignite Corporation Limited (NEYVELILIG) to NLC India Limited (NLCINDIA) w.e.f August 04, 2016

### BOARD MEETINGS

| COMPANY NAME | DATE     | PURPOSE                         | RS. PER SH. |
|--------------|----------|---------------------------------|-------------|
| CLNINDIA     | 3-Aug-16 | Annual General Meeting/Dividend | 10          |
| BASF         | 3-Aug-16 | Annual General Meeting/Dividend | 1           |
| DTIL         | 3-Aug-16 | Annual General Meeting/Dividend | 8           |
| GLENMARK     | 3-Aug-16 | Annual General Meeting/Dividend | 2           |
| GPPL         | 3-Aug-16 | Annual General Meeting/Dividend | 1.9         |
| GRANULES     | 3-Aug-16 | Annual General Meeting/Dividend | 0.2         |
| HONDAPOWER   | 3-Aug-16 | Annual General Meeting/Dividend | 6           |
| LFIC         | 3-Aug-16 | Annual General Meeting/Dividend | 3.5         |
| MINDAIND     | 3-Aug-16 | Dividend                        | 4           |
| MRF          | 3-Aug-16 | Annual General Meeting/Dividend | 94          |
| PAGEIND      | 3-Aug-16 | Annual General Meeting/Dividend | 24          |
| SAKSOFT      | 3-Aug-16 | Annual General Meeting/Dividend | 3           |
| ZODIACLOTH   | 3-Aug-16 | Annual General Meeting/Dividend | 1           |
| DBCORP       | 4-Aug-16 | Dividend                        | 4.25        |
| ASAHIINDIA   | 4-Aug-16 | Annual General Meeting/Dividend | 0.6         |
| FOSECOIND    | 4-Aug-16 | Dividend                        | 10          |
| INDIANCARD   | 4-Aug-16 | Annual General Meeting/Dividend | 2.5         |
| INEOSSTYRO   | 4-Aug-16 | Annual General Meeting/Dividend | 4           |
| HERCULES     | 4-Aug-16 | Annual General Meeting/Dividend | 1.5         |
| MADHAV       | 4-Aug-16 | Annual General Meeting/Dividend | 1           |
| JMCPROJECT   | 4-Aug-16 | Annual General Meeting/Dividend | 1           |
| MBLINFRA     | 4-Aug-16 | Annual General Meeting/Dividend | 1.5         |

## NEWS & RUMOURS:

- Gold (Spot Dollar) major support = \$1341/\$1299 & Resistance = \$1394/\$1420.
- Crude oil range->\$34 to \$44.
- Stocks Drop Amid Bank Woes, Oil Bear Market as Yen Strengthens: - Global stocks declined for a second day, as European bank declines worsened and weak oil prices weighed on oil producers. The yen strengthened after Japan's fiscal plan underwhelmed investors.
- Euro hits 5-week high, yen up after stimulus announced: - The euro rose above \$1.12 for the first time in more than a month on Tuesday while a cut in Australian interest rates failed to weaken the Australian dollar as the fallout of poor GDP data continued to weigh on its U.S. equivalent.
- Yen at highs as Japan approves \$130 bn stimulus package: - Yen higher vs. dollar as Japan Tuesday approves \$130 bn stimulus. The dollar hit a low of 101.47 yen after a high of 102.83. It was down 0.78% at 101.62 yen at 04:45 ET. Efforts to revive economy include cash payouts to low-income earners. Fiscal package also earmarks spending for infrastructure development. Headline figure for the package of \$273 bn includes public-private partnerships.
- Oil Retreats to Bear Market as Global Supply Glut Seen Growing: - Oil fell below \$40 a barrel in New York for the first time since April, falling into a bear market on concern that the global supply glut will expand. Saudi Arabia [cut prices](#) to Asian customers as the country continues to fight for market share. Drillers in the U.S. boosted the number of rigs seeking oil for a fifth week, the longest run of gains since last August; according to data from Baker Hughes Inc. U.S. crude and gasoline supplies are at the highest seasonal level in at least two decades.

## TRENDS & OUTLOOK – DATE: 03- Aug- 2016

### PRECIOUS METALS:

| COMMDITY (MCX) | S2    | S1    | PIVOT POINT | R1    | R2    |
|----------------|-------|-------|-------------|-------|-------|
| GOLD (Oct)     | 31190 | 31410 | 31700       | 31975 | 32165 |
| SILVER (Sep)   | 45700 | 47200 | 48060       | 49100 | 50245 |

### BASE METALS

| COMMDITY (MCX) | S2     | S1     | PIVOT POINT | R1     | R2     |
|----------------|--------|--------|-------------|--------|--------|
| COPPER (Aug)   | 318    | 322    | 328         | 333    | 337    |
| ZINC (Aug)     | 146.10 | 148.50 | 151.70      | 154.50 | 157.10 |
| LEAD (Aug)     | 116.10 | 118.60 | 121.30      | 123.45 | 126.25 |
| NICKEL (Aug)   | 675    | 691    | 712         | 734    | 752    |

### ENERGY

| COMMDITY (MCX)    | S2   | S1   | PIVOT POINT | R1   | R2   |
|-------------------|------|------|-------------|------|------|
| CRUDE OIL (Aug)   | 2410 | 2500 | 2670        | 2790 | 2875 |
| NATURAL GAS (Aug) | 174  | 178  | 185         | 189  | 195  |

### DATE TALKS : TODAY'S ECONOMIC DATA :

Caixin Services PMI of China, Services PMI of GBP, ADP Non-Farm Employment Change, Final Services PMI, ISM Non-Manufacturing PMI, Crude Oil Inventories.





**Registered Office**

Indira House, 3rd Floor, 5 Topiwala Lane,  
Opp. Lemington Road Police Station, Grant Road (East), Mumbai - 400007.

**Corporate Office**

'Ramavat House' E-15, Saket Nagar, Indore - 452018 (M.P.)

**Customer Care**

Tel: +91-731-4097170/ 71/ 72/ 73/ 74 M. +91 93031 72345

Email: [customercare@indiratrade.com](mailto:customercare@indiratrade.com) [www.indiratrade.com](http://www.indiratrade.com)



**INSTITUTIONAL DEALING UNIT**

Africa House, 5, Topiwalla Lane, Lamington Road, Mumbai, 400007

Tel: +91 22 30080678 Fax : +91 22 23870767 Email : [ie@indiratrade.com](mailto:ie@indiratrade.com)

**Disclaimer**

This report is for private circulation within the Indira Group. This report is strictly confidential and for information of the selected recipient only and may not be altered in any way, transmitted to, copied or distributed, in part or in whole, to any other person or to the media or reproduced in any form. This report should not be construed as an offer or solicitation to buy or sell any securities or any interest in securities. It does not constitute a personal recommendation or take into account the particular investment objectives, financial situations, or any such factor. The information, opinions estimates and forecasts contained here have been obtained from, or are based upon, sources we believe to be reliable, but no representation of warranty, express or implied, is made by us to their accuracy or completeness. Opinions expressed are our current opinions as of the date appearing on this material only and are subject to change without notice.